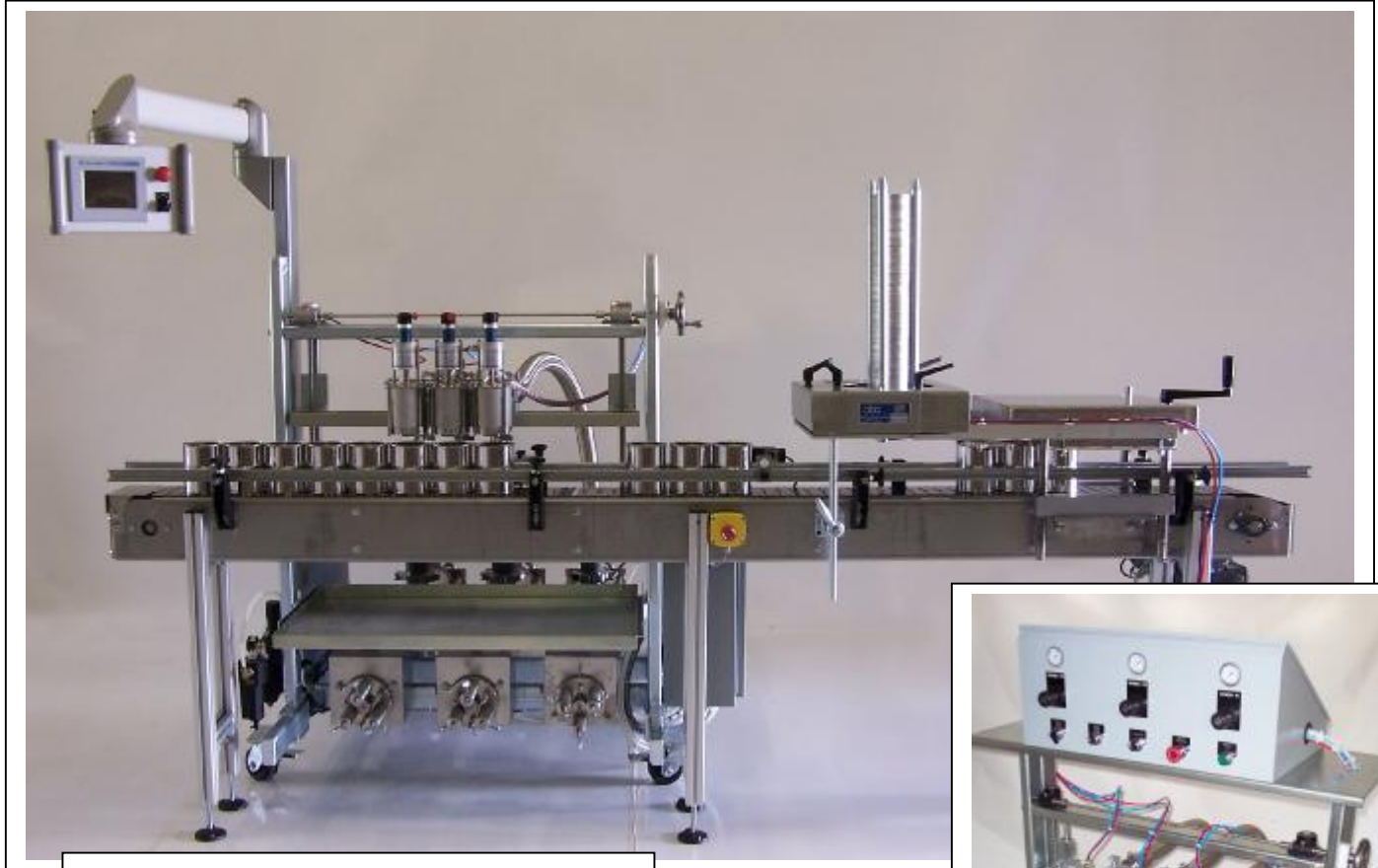


VOLUMETRIC FILLING MACHINES



ABA-AF-3T PLC Controls



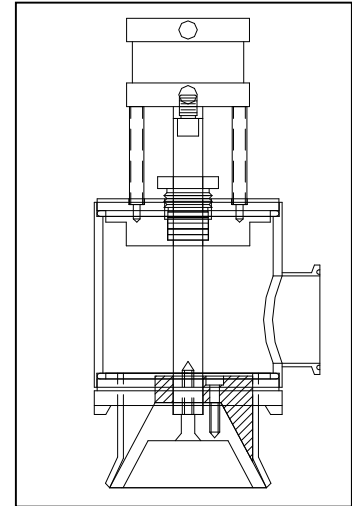
3 Head Module
 Pneumatic controls

- Volumetric Filler with double acting pumps
- For speeds see over
- Oversized drip tray and guard fully protect pumps
- Pneumatic (as shown at right) or P.L.C. controls (above) with operator diagnostic display (shows cans per minute, faults, number of cans filled, one head/two heads, etc.)
- Built to accept extra fill heads to gain additional speed - can be added on site
- Accuracy to 1/4 of 1% by volume
- Stainless steel conveyor, Aluminum main frame
- Fully mobile pump frame for easy maintenance
- Optional lid placer/presser, semi auto operations and 5 gallon pail filling.

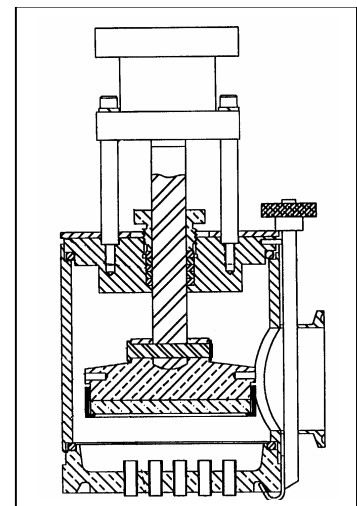


CAPACITIES AND PERFORMANCE:

Number Of Fill Heads	Container Size	Containers per Minute (*)	Pneumatic Consumption (SCFM @ 80 psi)	Electric Consumption (Kw.)	Crated weight (lbs.)	Number Of Conveyors
1	½ & 1 Pint	30	1.0	½	1475	1
	Quart (1 lt.)	25	1.3			
	Gallon (4 lt.)	15	3.0			
	Gallon with Speed nozzle.	20	4.0			
2	½ & 1 Pint	60	1.0	½	1675	1
	Quart (1 lt.)	50	2.5			
	Gallon	30	6.0			
	Gallon with Speed nozzle.	40	8.0			
3	½ & 1 Pint	60	1.5	½	1875	1
	Quart (1 lt.)	60	3.0			
	Gallon (4 lt.)	42	8.5			
	Gallon with Speed nozzle.	55	11.0			
4	½ & 1 Pint	120	3.0	1	3500	2
	Quart (1 lt.)	100	5.0			
	Gallon (4 lt.)	60	12.0			
	Gallon with Speed nozzle.	80	16.0			



ABA-COV-85 Cone fill head



ABA-COV-26 Capillary fill head

(*) - Containers per minute are dependant on container size, shape and fill opening as well as individual product characteristics.

